

## 105 Cartington Terrace

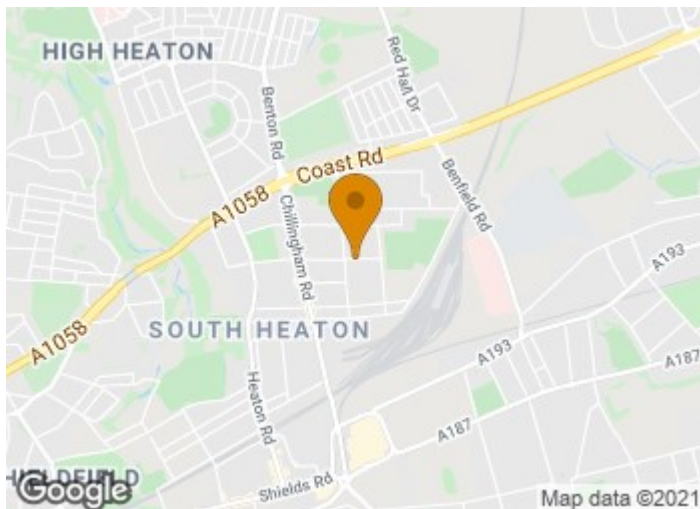
Heaton, NE6 5SJ

Available with no onward chain this well presented upper 3 bed Tyneside flat available on Cartington terrace. Internally the property comprises entrance hall, lounge, kitchen, bathroom and 3 bedrooms. Externally there is a private yard to the rear. Additional benefits include gas central heating and double glazing.

**£135,000**

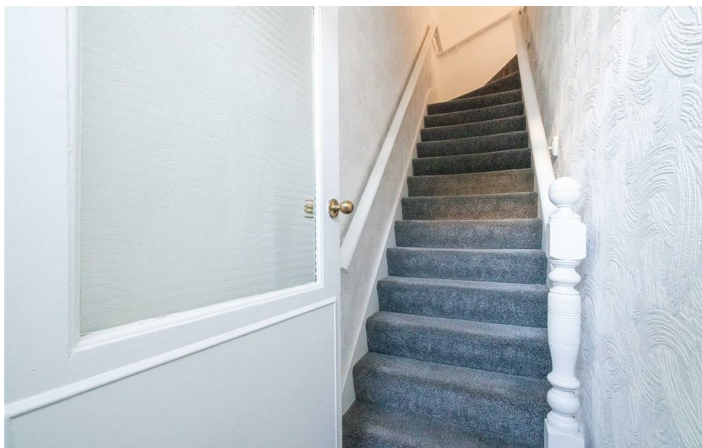
# 105 Cartington Terrace

Heaton, NE6 5SJ

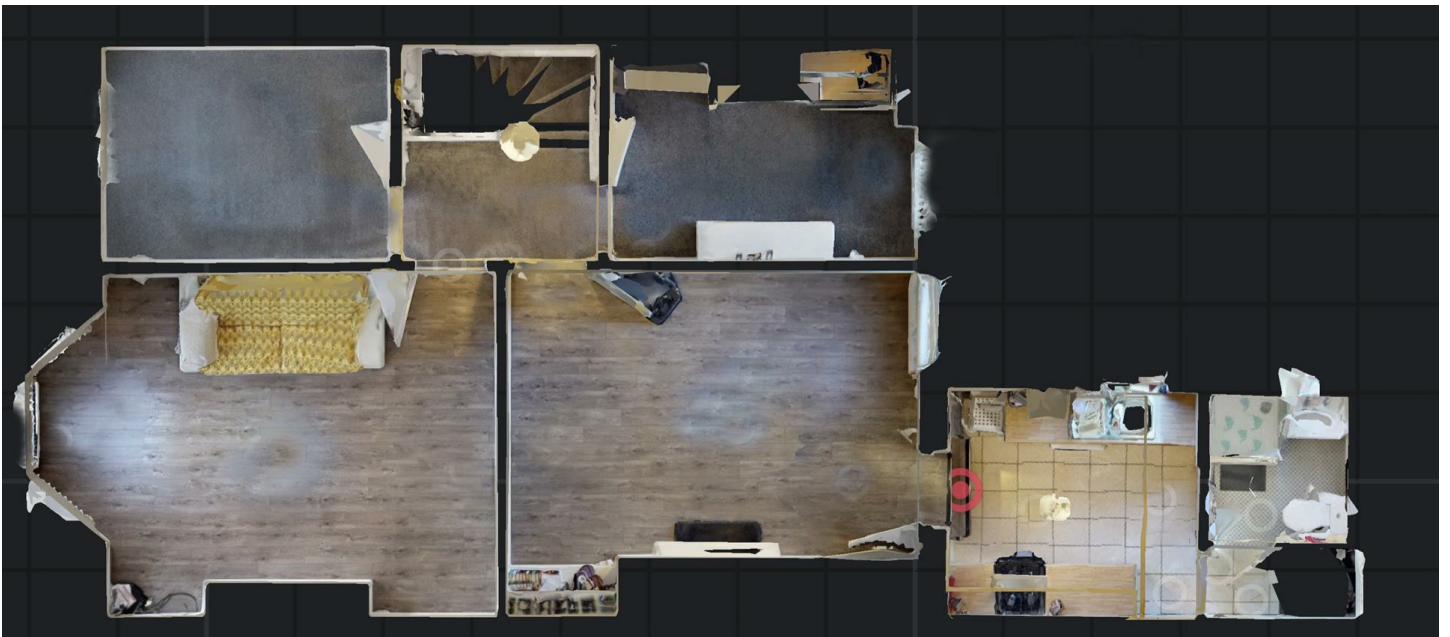


- \*\*360 Virtual Tour\*\*
- £135,000
- Three Bedroom Upper
- Gas Combi Boiler
- On Street Parking
- Private Rear Yard
- Double Glazed
- Near to Iris Brickfield park
- No upper Chain
- Call today for viewings





## Floor Plan



These particulars, whilst believed to be accurate are set out as a general outline only for guidance and do not constitute any part of an offer or contract. Intending purchasers should not rely on them as statements of representation of fact, but must satisfy themselves by inspection or otherwise as to their accuracy. No person in this firm's employment has the authority to make or give any representation or warranty in respect of the property.

Energy Efficiency Rating		Current	Potential	Environmental Impact (CO <sub>2</sub> ) Rating		Current	Potential
Very energy efficient - lower running costs				Very environmentally friendly - lower CO <sub>2</sub> emissions			
(92 plus) <b>A</b>				(92 plus) <b>A</b>			
(81-91) <b>B</b>				(81-91) <b>B</b>			
(69-80) <b>C</b>				(69-80) <b>C</b>			
(55-68) <b>D</b>				(55-68) <b>D</b>			
(39-54) <b>E</b>				(39-54) <b>E</b>			
(21-38) <b>F</b>				(21-38) <b>F</b>			
(1-20) <b>G</b>				(1-20) <b>G</b>			
Not energy efficient - higher running costs				Not environmentally friendly - higher CO <sub>2</sub> emissions			
England & Wales		EU Directive 2002/91/EC		England & Wales		EU Directive 2002/91/EC	